

A0 INSTALLATION DRAWING

IF THIS DOCUMENT IS PRINTED IN HARDCOPY, IT IS FOR INFORMATION USE ONLY AND THEREFORE IS NOT SUBJECT TO UPDATING CONTROLS. ALWAYS REFER TO SOLIDWORKS VIEWER FOR LATEST ISSUE



THIS DRAWING IS CONFIDENTIAL AND IS SUPPLIED ON THE EXPRESS CONDITION THAT IT SHALL NOT BE LOANED OR COPIED OR DISCLOSED TO ANY OTHER PERSON OR USED FOR ANY OTHER PURPOSE WITHOUT THE WRITTEN CONSENT OF AP RACING LTD.



AP Racing
Wheler Road
Coventry
CV3 4LB
Tel: +44 024 7663 9595
Fax: +44 024 7663 9559
e-mail: sales@apracings.co.uk
Web site: HTTP://www.apracings.com

GENERAL DESCRIPTION

THIS IS A 2-POT CALIPER DESIGNED TO OPERATE ON AN IRON DISC OF UP TO DIA 282.0MM X 10MM THICK. ALL CALIPERS ARE FITTED WITH STAINLESS STEEL BRIDGE PIPES AS STANDARD. THIS CALIPER IS FITTED WITH DUST SEALS IN THE BORES.

TYPICAL APPLICATION

LIGHTWEIGHT SINGLE SEATER CARS

TECHNICAL INFORMATION

PISTON DIA : 2 X 44.5MM
TOTAL PISTON AREA : 31.11CM²
PISTON MATERIAL - ALUMINIUM ALLOY
BODY MATERIAL - ALUMINIUM ALLOY
ALL HYDRAULIC THREADS M10 X 1.0

INSTALLATION INFORMATION

DISC AND CALIPER MOUNTING TOLERANCES TO BE SUCH THAT THE DISC IS CENTRAL TO THE CALIPER TO WITHIN ±0.5MM. CALIPER TO BE MOUNTED WITHIN ±15° FROM VERTICAL. DISC CLEARANCE SHOULD BE 2.5MM NOM. FROM DISC O.D. TO PATHWAY.

KEY TO DIMENSIONS

DIMENSION 'PL' TOP OF PAD MATERIAL TO MOUNTING BOSS FACE WITH PAD SITTING DOWN ON LEDGE. DIMENSION 'U' WHEEL CENTRE TO CALIPER MOUNTING BOSS FACE (DISC DIAMETER/2 - 'PL' DIMENSION).

HANDING NOTE

RH AS SHOWN LH OPPOSITE

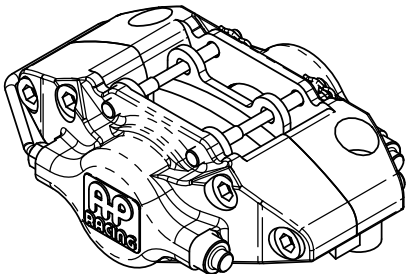
DISC WEAR NOTE

CALIPER DESIGNED TO OPERATE WITH MIN. DISC THICKNESS OF 8.00mm (ASSUMING WEAR DIFFERENTIAL FROM INBOARD AND OUTBOARD FACE NOT EXCEEDING 0.5mm)

ELVD NOTE

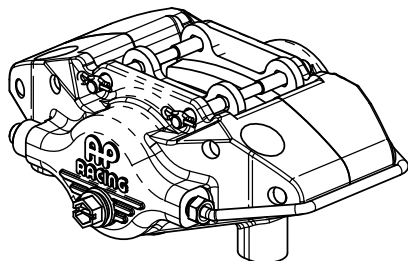
ALL MATERIALS AND COATINGS COMPLY WITH E.U. DIRECTIVE 2000/53/EC

Part Number Cross-reference	
AP Racing Part Number	Description
CP5119-12S4	RHT OR RHL - UNPAINTED
CP5119-13S4	LHT OR RFL - UNPAINTED
CP5119-12S4BK	RHT OR RHL - PAINTED
CP5119-13S4BK	LHT OR RFL - PAINTED



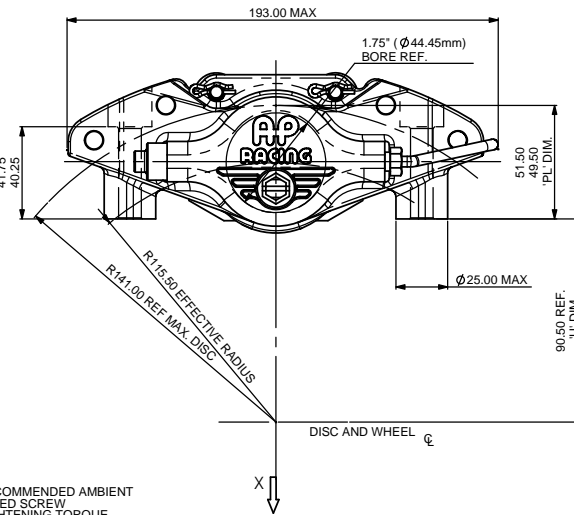
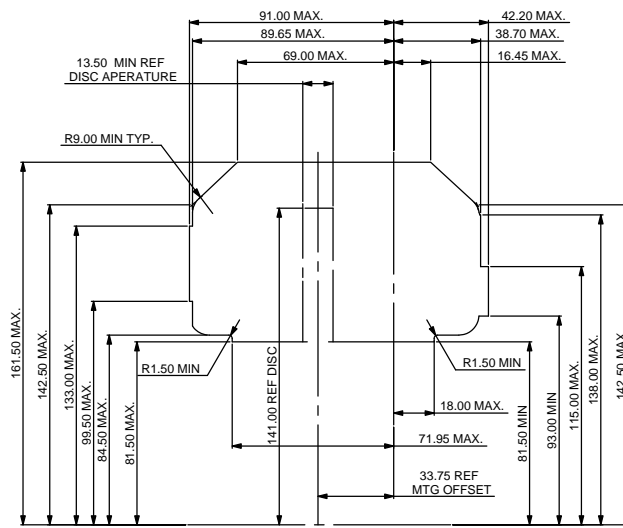
LEFT-HAND TRAILING (LHT) CALIPER ASSEMBLY

CP5119-13S4

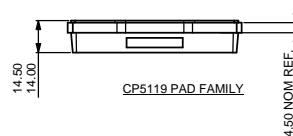
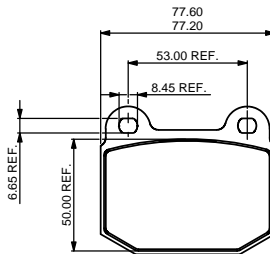
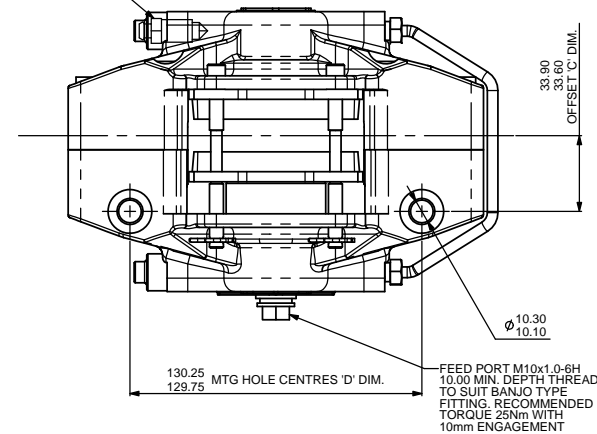


RIGHT-HAND TRAILING (RHT) CALIPER ASSEMBLY

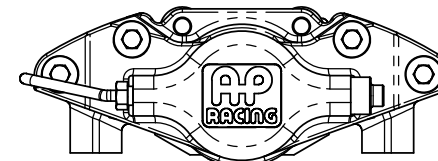
CP5119-12S4



RECOMMENDED AMBIENT BLEED SCREW TIGHTENING TORQUE 17.0 Nm (12.5 lbs/ft)



CP5119 PAD FAMILY



VIEW ON ARROW 'X'

Issue No.	Alterations			Zone	Initials
	Date & No.	Particulars	#		
1	R3126 13/10/09	FIRST ISSUE			GD
2	R3441 18/01/11	DRAWING UPDATED TO CURRENT STANDARD.			CJ

SCALE 1:1	SHEET 1 OF 1
DRAWN GREG DOLMAN	
APPROVED	
DERIVED FROM	
TITLE 2 x 1.75" RADIAL MOUNTING CALIPER INSTALLATION	
DRG NO.	CP5119-29CD